



9/125 Overland Drive Edens Landing QLD

3  1  1 

Nestled in the heart of the thriving, family-friendly suburb of Edens Landing, this lovely, light-filled, low-maintenance three-bedroom townhouse offers a perfect blend of space, style, and convenience. Within a highly sought-after complex, this property stands out with features that make it ideal for those looking to step into the property market, raise a young family, or add a smart investment to their portfolio.

Type : Townhouse
Price : \$ 555,000
Land Size : 125 sqm
View : <https://www.zestvo.com/property/9125-overland-drive-edens-landing-qld/8304814>

Key Features You'll Love:

- Spacious Open-Plan Living: Designed for modern lifestyles, the open-plan living area creates the perfect space to relax and entertain.

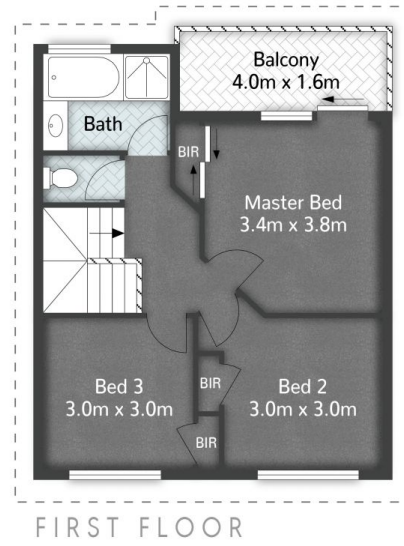
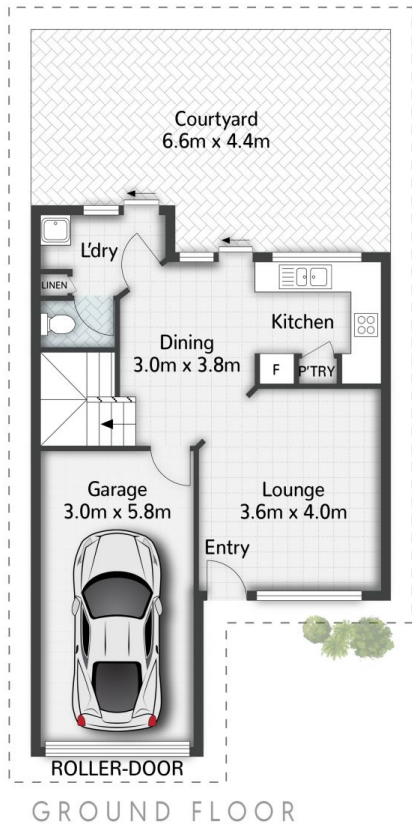
[For full version visit the website](#)



Hannah Shine
0403 777 724



Jack Shine
0422 839 224



9/125 Overland Drive **EDENS LANDING**

3 | 1 | 1 | 141m²

All dimensions are approximate; they are subject to errors and inaccuracies and no liability will be accepted. Plans are shown for marketing purposes only.

Zevesto Office | 07 3133 3808