






13 Ben Lexcen Court Mount Warren Park QLD

3  2  4 

Discover the pinnacle of modern living at 13 Ben Lexcen Ct, Mount Warren Park. This newly renovated home has undergone a complete transformation, showcasing a perfect fusion of style, functionality, and comfort. From the moment you arrive, the sleek and contemporary aesthetic is evident, starting with the extra-wide front door equipped with a Samsung smart lock. Inside, the insulated hybrid vinyl flooring flows effortlessly throughout, offering a luxurious yet practical foundation for the entire home.

The heart of the house is its sophisticated kitchen, where a ceramic countertop, tile backsplash, and a sleek Cefito sink create a seamless and stylish workspace. Blackout blinds enhance privacy, while air conditioning ensures a cool and inviting atmosphere, making it a dream for any home chef.

Type : House
Price : \$ 865,000
Land Size : 1090 sqm
View : <https://www.zestvo.com/property/13-ben-lexcen-court-mount-warren-park-qld/8234600>

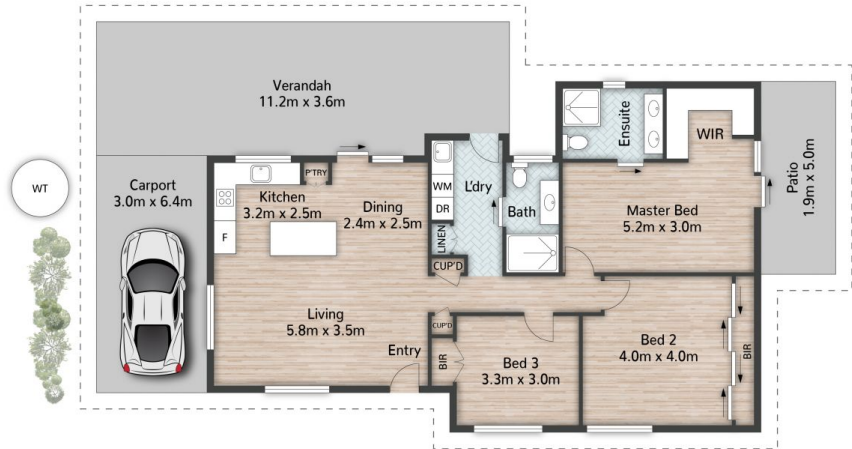
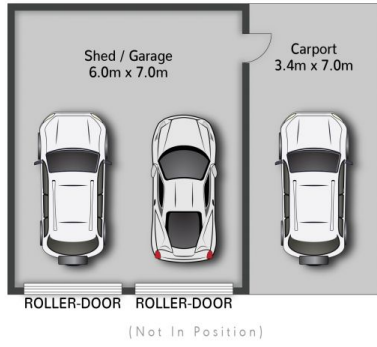


Jack Shine
0422 839 224



Hannah Shine
0403 777 724

[For full version visit the website](https://www.zestvo.com)



13 Ben Lexcen Court MOUNT WARREN PARK

3 | 2 | 4 | 179m²

All dimensions are approximate; they are subject to errors and inaccuracies and no liability will be accepted. Plans are shown for marketing purposes only.

Zevesto Office | 07 3133 3808